

# PORTO BLUETOOTH ADAPTERS

## USER MANUAL

### BA510



USB Bluetooth adapter version 2.0  
Class II  
Enhanced Data Rate (EDR) - data  
transmission up to 2.1Mbps  
Working range - up to 10m.  
BT Chip - Broadcom  
Software - Widcom 4.1  
Windows VISTA compatible

### BA610



USB Bluetooth adapter version 2.0  
Class II  
Enhanced Data Rate (EDR) - data  
transmission up to 2.1Mbps  
Working range - up to 10m.  
BT Chip - Broadcom  
Software - Widcom 4.1 Skype API support  
Windows VISTA compatible

# Introduction

## INTRODUCTION TO BLUETOOTH WIRELESS TECHNOLOGY

Bluetooth is a short- range wireless communication technology. It allows wireless connections between Bluetooth devices such as cellular phones, personal digital assistants (PDA), desktop and notebooks computers, input-output devices (mouse, keyboards, and printers), and home appliances. Bluetooth refers to a worldwide standard designed to operate in the internationally recognized ISM (Industrial Scientific and Medical) frequency band. Within the ISM band (2.4 GHz – 2.48 GHz) Bluetooth transmissions hop between 79 separate frequencies 1,600 times every second, and with a communication range of about 10 meters (33 feet) for class II or 100 meters (330 feet) for class I.

## INTRODUCTION TO BLUETOOTH USB ADAPTER

Bluetooth USB Adapter is a Bluetooth enabler, that enables your desktop or notebook computer to connect wirelessly to any other Bluetooth enabled computers and devices. It allows a working range of up to 10 (class 2)/100 (class 1) meters (33/330 feet) with a 723 Kbps data rate transmission, and complies with Bluetooth 1.2 and USB 1.1 (support the two lower data-transfer rates of either 1.5 Mb/s or 12 Mb/s)/2.0(support all three data rates: 1.5 Mb/s, 12 Mb/s, and 480 Mb/s. the fast data-transfer rate of 480 Mb/s) specifications. Bluetooth USB Adapter is an ideal solution for home and mobile networking needs. It is easy to install and use for wireless connectivity to devices such as cellular phones, PDAs, printers, computers, keyboards, mice etc.

## Pairing Guide

### WHAT IS PAIRING?

Pairing is a process of associating Bluetooth devices with each other. It allows avoiding entering access information every time when a connection is requested. Bluetooth devices need to be paired with each other before attempting a connection at first time.

Paired devices will remain paired, even if:

- One of the devices is un-powered.
- A service connection is interrupted or stopped.
- One or both devices are rebooted.

### PASS KEY

Paired devices share a unique Pass Key (also referred to as Link Key), by which they authenticate with each other when connecting. The Pass Key can be alphanumeric, numbers, or letters, and must consist of one or up to 16 characters.

### HOW TO PAIR DEVICES?

Automatically -- If a passkey is required before connection, devices will pair automatically the first time they connect (a passkey must be successfully exchanged).

Manually -- In the main window of Bluetooth Manager, right click a device, select Pair Device from the popup menu, and then input a same passkey on both sides.

## Compatible Operating Systems

Windows Vista

Windows XP

Windows XP Professional, x64 Edition

Windows 2000

Windows ME

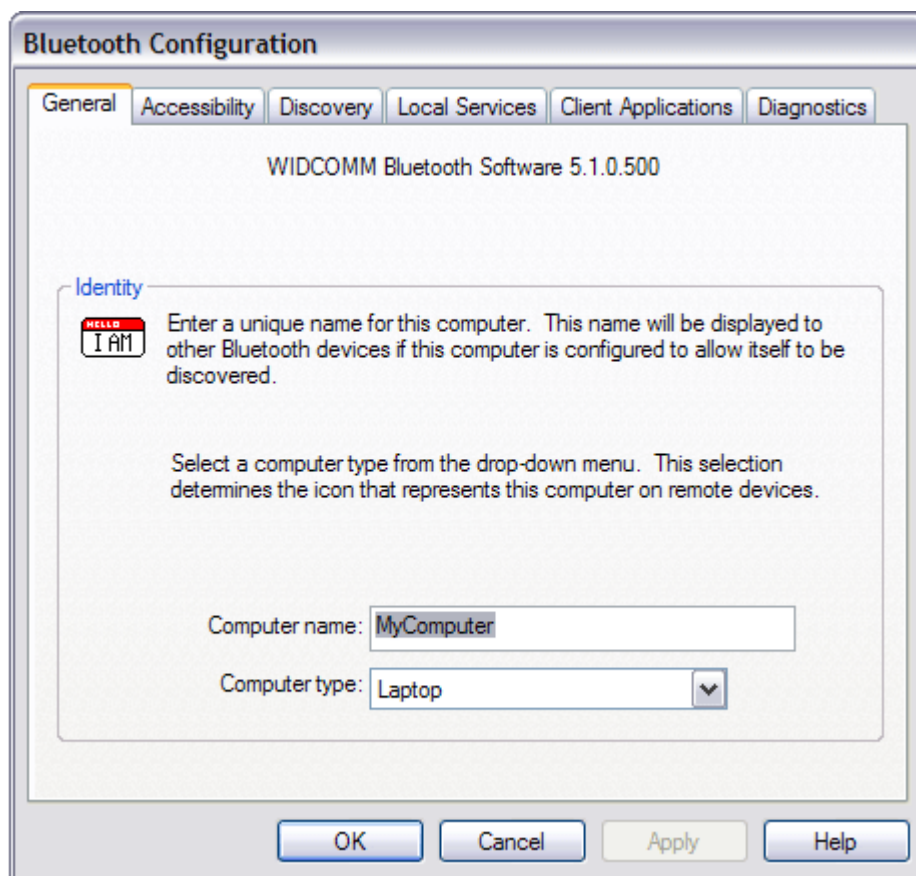
Windows 98 Second Edition

Mac OS 10.2

## Configuring Bluetooth Device on your Computer

### SETTING COMPUTER NAME:

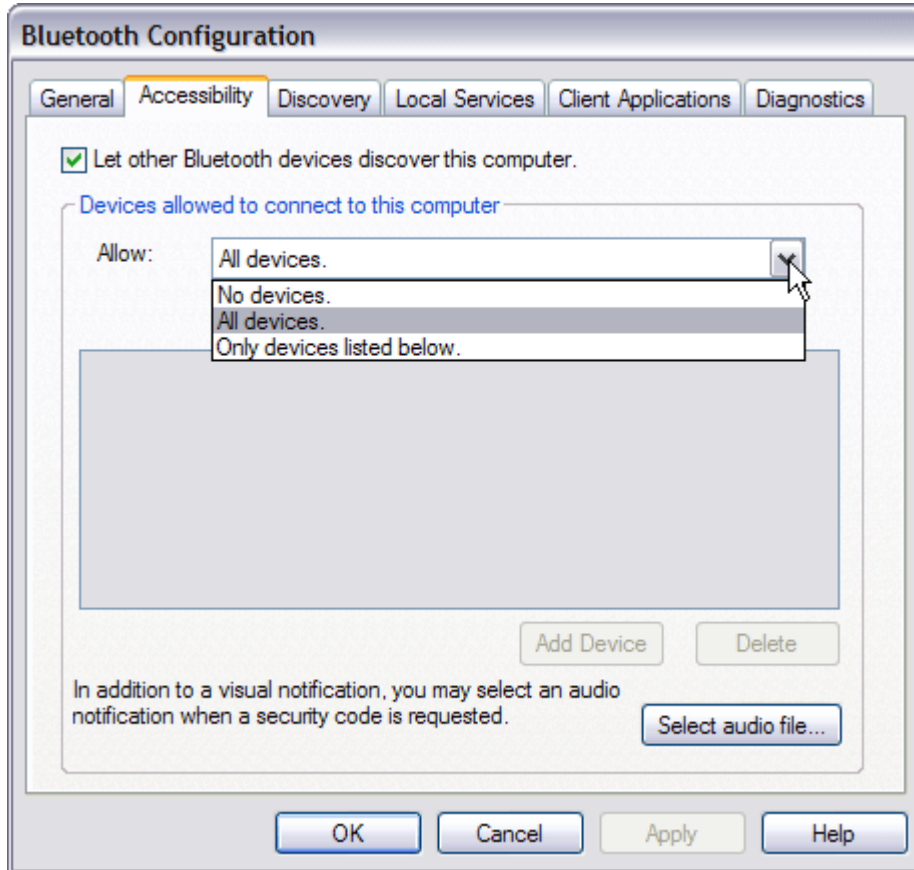
Please press “Start”, then “Control Panel”, and then “Bluetooth Devices”



Please enter the computer name you wish to assign in the field “Computer Name”, which will be visible by other Bluetooth devices.

## SETTING UP DISCOVERY ON YOUR COMPUTER

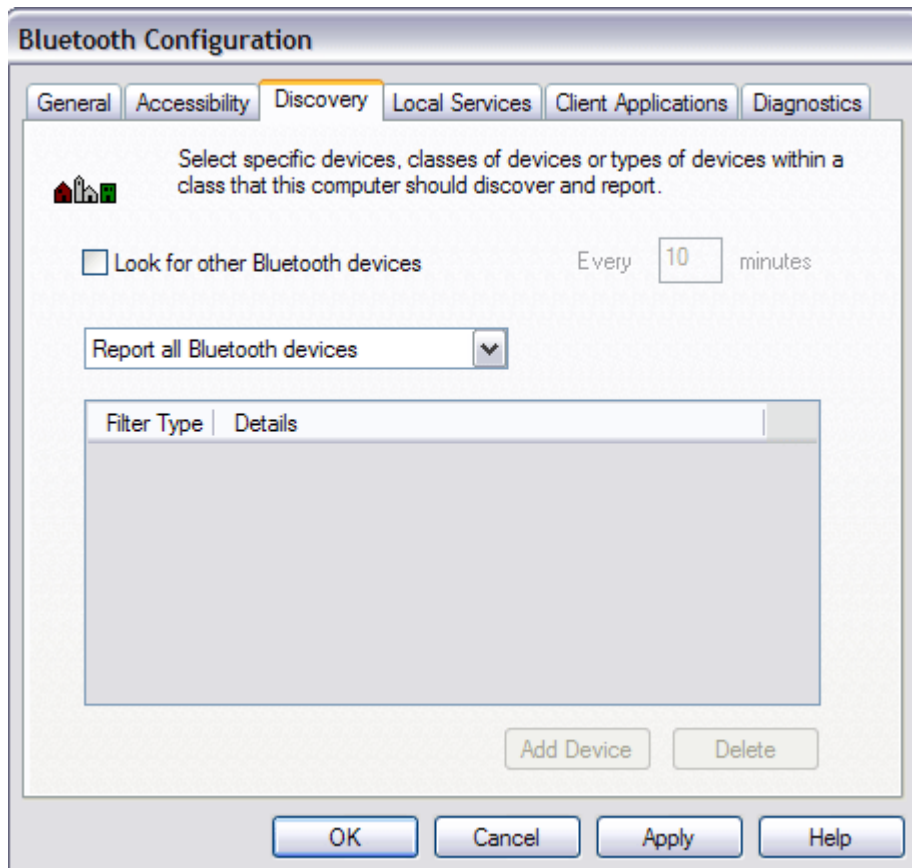
If you wish to allow other Bluetooth device to find and connect to your computer, then please click on the tab “Accessibility” and set up the necessary setting which you require:



## AUTOMATICALLY SEARCH FOR DEVICES

If you wish to allow your computer to locate other Bluetooth devices within range, then you need to select the “Discovery” tab, and check the box which says “Look for other Bluetooth devices”, and enter a value which will correspond to how often the computer searches for new devices. At the same time, you can also select the type of Bluetooth devices which will be searched for:

- Report all Bluetooth devices
- Report only selected Bluetooth devices

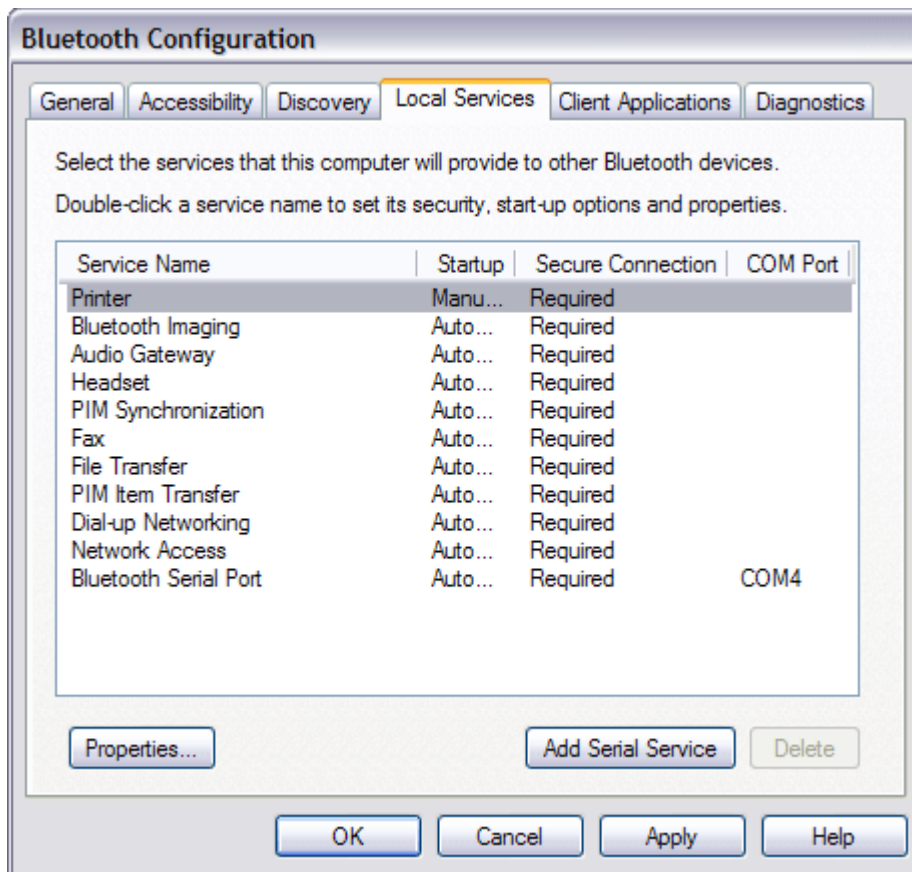


## SECURITY SETTINGS

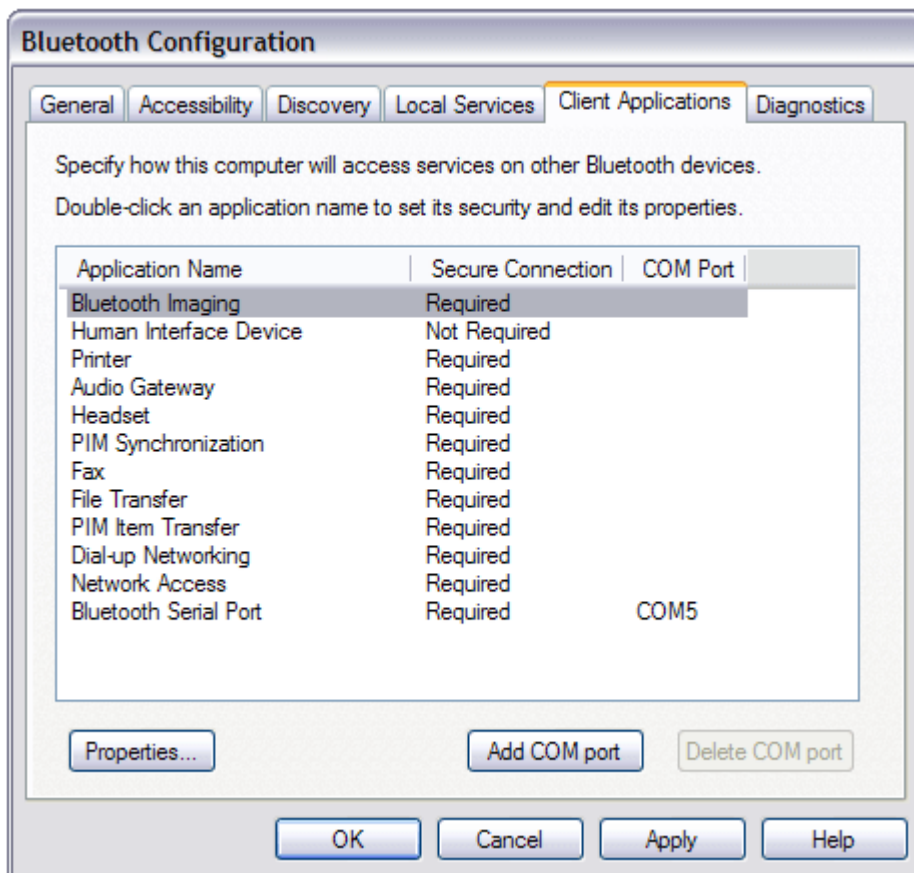
Initially, all Bluetooth services (except HID) are set up to require authentication. At the attempt to connect two devices together, there will be a request made on each device to enter a password, and if the password matches on both devices, they are successfully connected. Depending on the settings, the password can be provided automatically, is entered manually, or is not required at all.

## CONTROLLING BLUETOOTH DEVICES AND SERVICES

On the tab “Local Services” one can select the required service and modify the settings. For example, one can set a password for a particular service, set a sound notification, as well set the device start up; either automatically or manually. To modify the service settings, one needs to select the necessary service, right click the mouse button over that service, and select “Properties” on the popup menu.



The tab “Client Applications” allows one to configure the way in which the computer will use services from other Bluetooth devices. The settings for this tab are set the same way as from the previous tab “Local Settings”.



## Attention!

Before starting to use either a Bluetooth keyboard or mouse, please read the product instructions carefully. Please make sure that the Bluetooth device being connected to the computer has fully charged/brand new batteries installed, after which please press the “Connect” button located on that device.

On the computer, open “My Bluetooth Places”.

Click on “Add a Bluetooth Device”. Please make sure that the device being added is in discovery mode, the “Connect” button has been pressed on it, and then press “Next”.

After the device which you are trying to add appears in the screen, please select it and click on “Next”.

If the HID device being connected is a keyboard, enter the password code for that device in the “Bluetooth Security Code” section and then press “ENTER”. If the HID device connected is a mouse or other device, then no password is required.

Now the device should be connected and you can proceed to use the device.

Other devices are connected in a similar fashion.